



# Bristol Warren Regional School District

## RIDE Necessity of School Construction

---



PMA Consultants

PERKINS —  
EASTMAN

SCHOOL COMMITTEE | 11.18.2024



# GENERAL PROJECT UPDATE

---



PMA Consultants

PERKINS —  
EASTMAN



# STAGE III PROGRESS UPDATE

23Sep24 - School Committee

Last SC meeting

- 
- 24Sep24 - User Group Meetings at MHHS
  - 25Sep24 - Target Date: RIDE DD Review comments
  - 26Sep24 - AE/OPM Coordination Meeting
  - 02Oct24 - Bristol TRC Meeting
  - 03Oct24 - AE/OPM Coordination Meeting
  - 10Oct24 - AE/OPM Coordination Meeting
  - 10Oct24 - Bristol Planning Board
  - 11Oct24 - Warren TRC Meeting
  - 11Oct24 - Security Meeting
  - 17Oct24 - AE/OPM Coordination Meeting
  - 24Oct24 - AE/OPM Coordination Meeting
  - 28Oct24 - User Group Meetings (Admin and CTE)
  - 28Oct24 - School Committee (KMS Chevron Approval)
  - 28Oct24 - Warren Planning Board
  - 29Oct24 - Test Well Drilling 10/29-11/18 (Geothermal & Irrigation)
  - 31Oct24 - School Building Committee
  - 03Nov24 - AE/OPM Coordination Meeting
  - 18Nov24 - School Committee

Upcoming

- 
- 20Nov24 - User Group Special Ed Meeting
  - 21Nov24 - AE/OPM Coordination Meeting
  - 28Nov24 - AE/OPM Coordination Meeting
  - 05Dec24 - AE/OPM Coordination Meeting
  - 05Dec24 - School Building Committee



# Planning Board Update

---



PMA Consultants

PERKINS —  
EASTMAN

# PLANNING BOARD UPDATE

- **Master Plan Approved**
  - Waiver granted for RIDEM and Preliminary Plan to occur at same time (Bristol & Warren)
  - Major Topics:
    - Bristol
      - Synthetic Turf
      - Parking Counts
      - Impervious Surface
      - Irrigation
    - Warren
      - Parking/Traffic Circulation
      - Playground Structures
      - Stormwater Management
      - Hydrant Location
- **Preliminary Plan Submission**
  - Bristol (1/3/25)
  - Warren (1/3/25)



# DESIGN UPDATE - Exterior

---



PMA Consultants

PERKINS —  
EASTMAN



CONCEPT

# A Village





INSPIRATION

# Building Color & Texture







MT HOPE  
HIGH SCHOOL







# DESIGN UPDATE - Interior

---



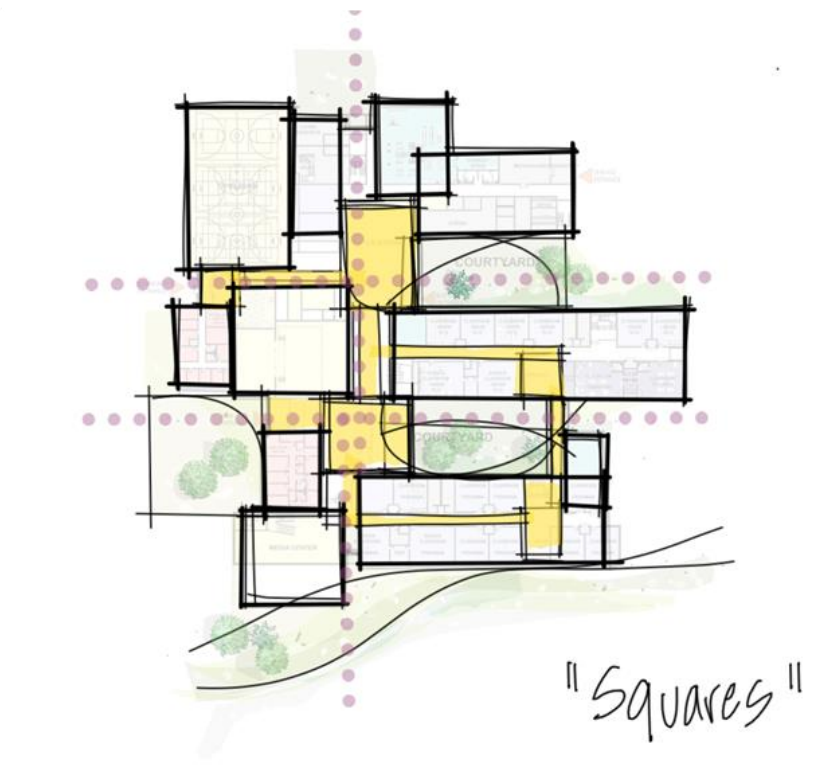
PMA Consultants

PERKINS —  
EASTMAN



# ORGANIZATIONAL CONCEPT

## A Village

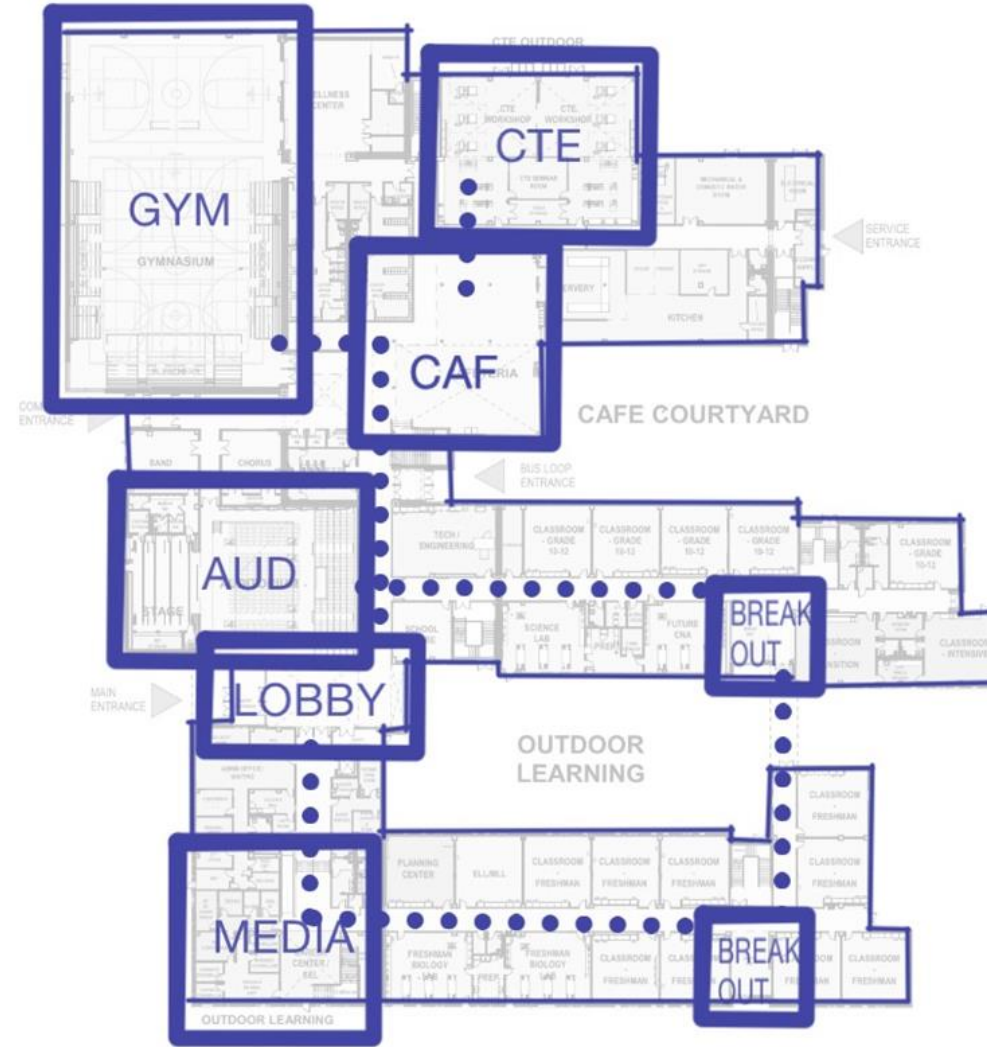


### MASSING + SCALE



# CONCEPT

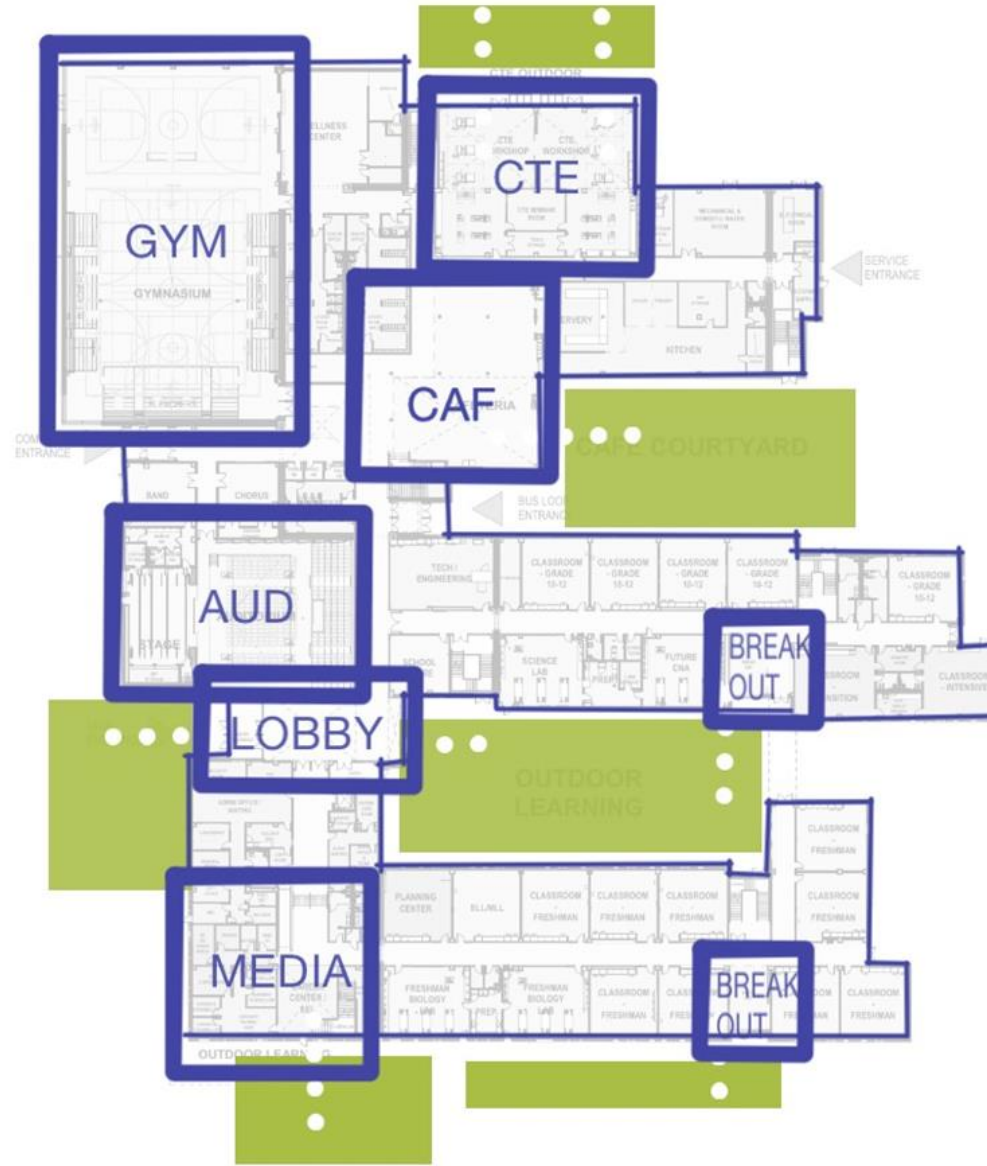
## A Village





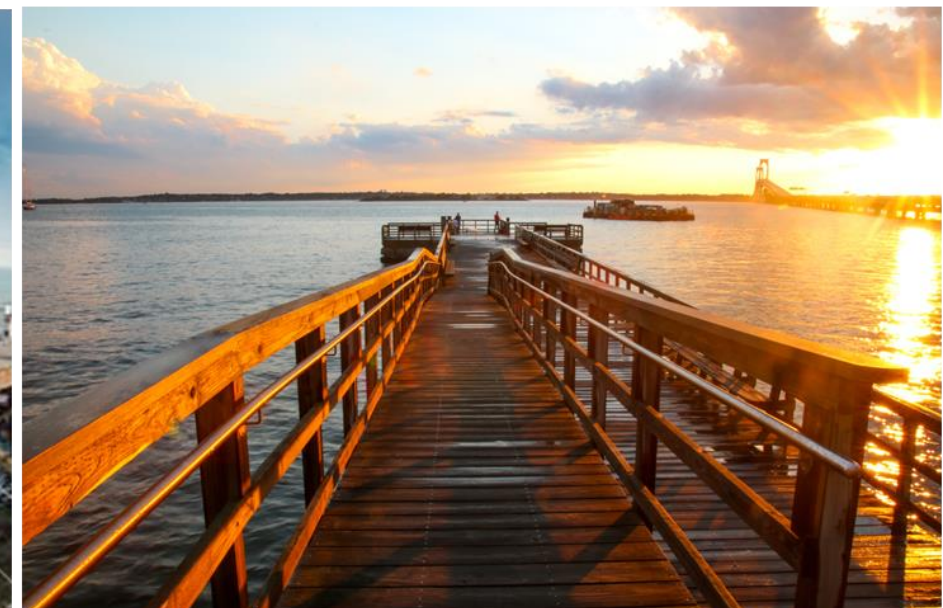
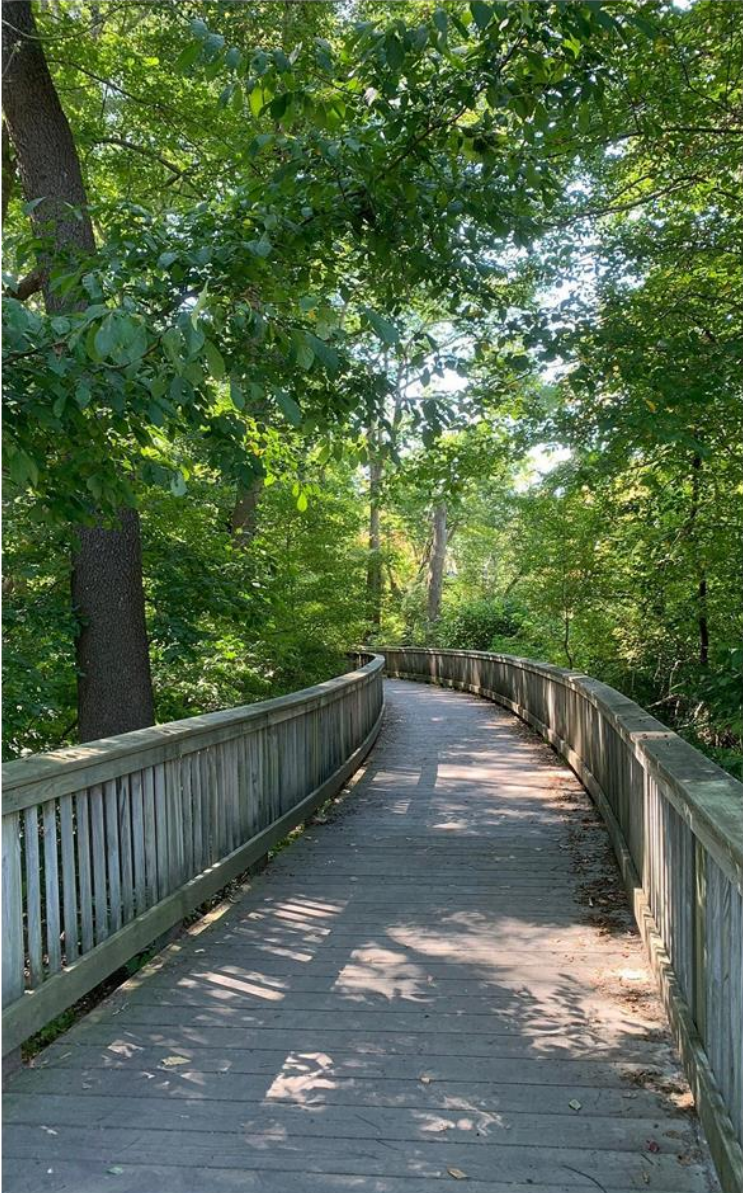
# CONCEPT

## A Village



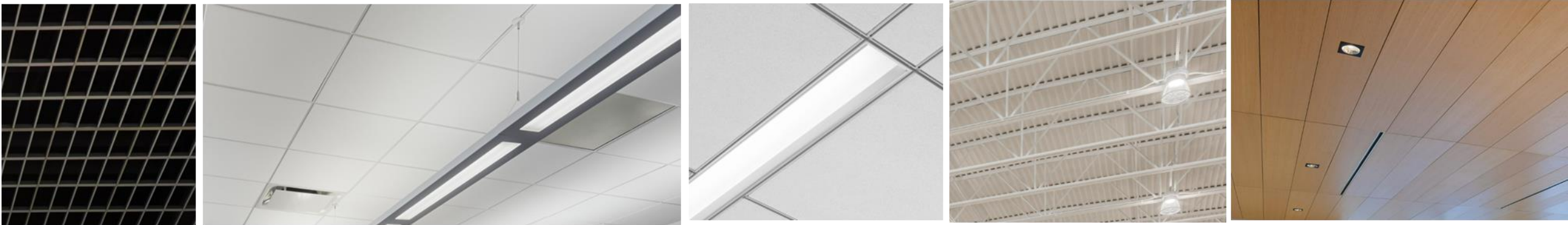


# INSPIRATION Green Ways & Blue Ways





# MATERIAL PALETTE





# FINISH SAMPLES



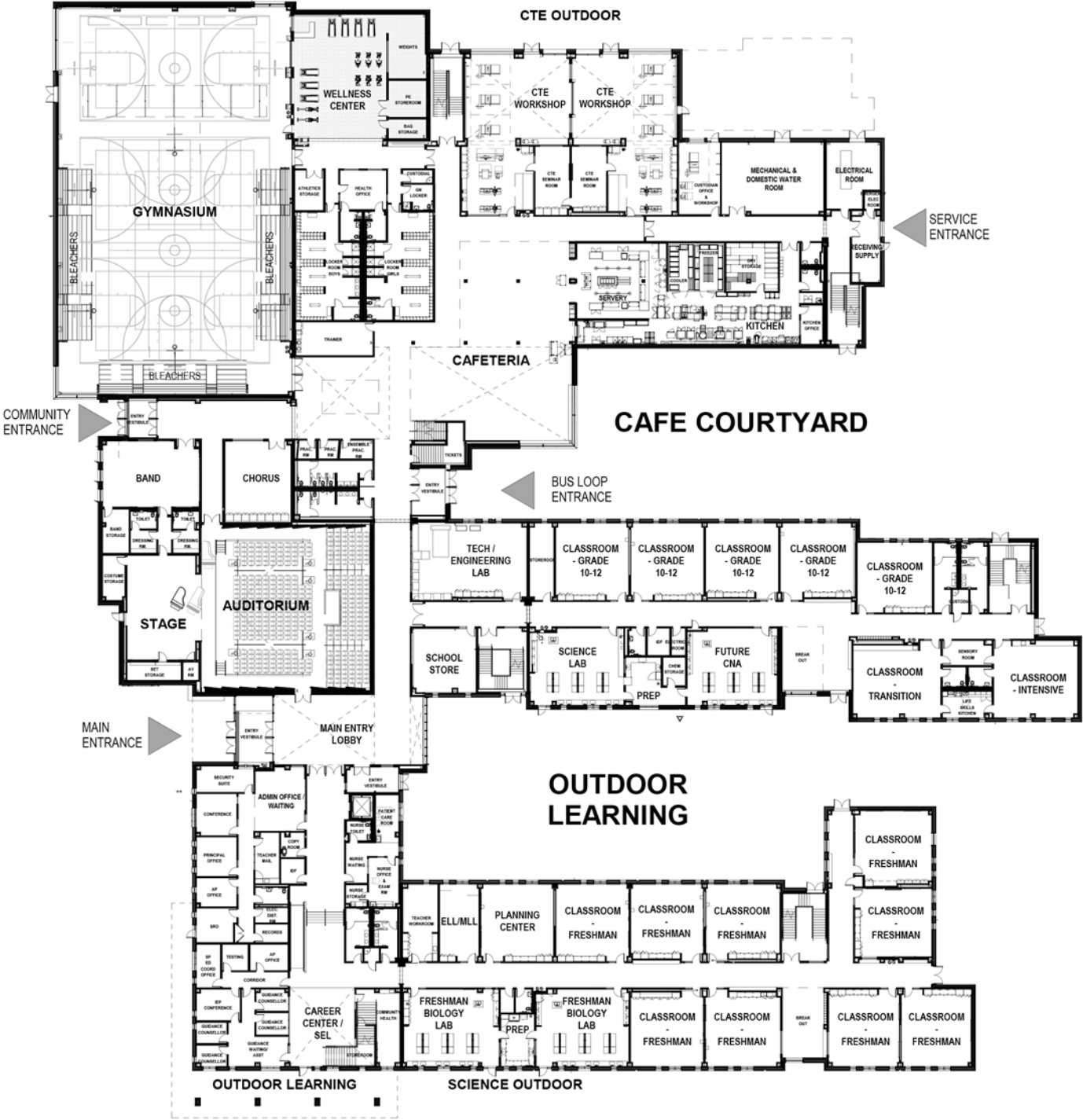


# FINISH SAMPLES



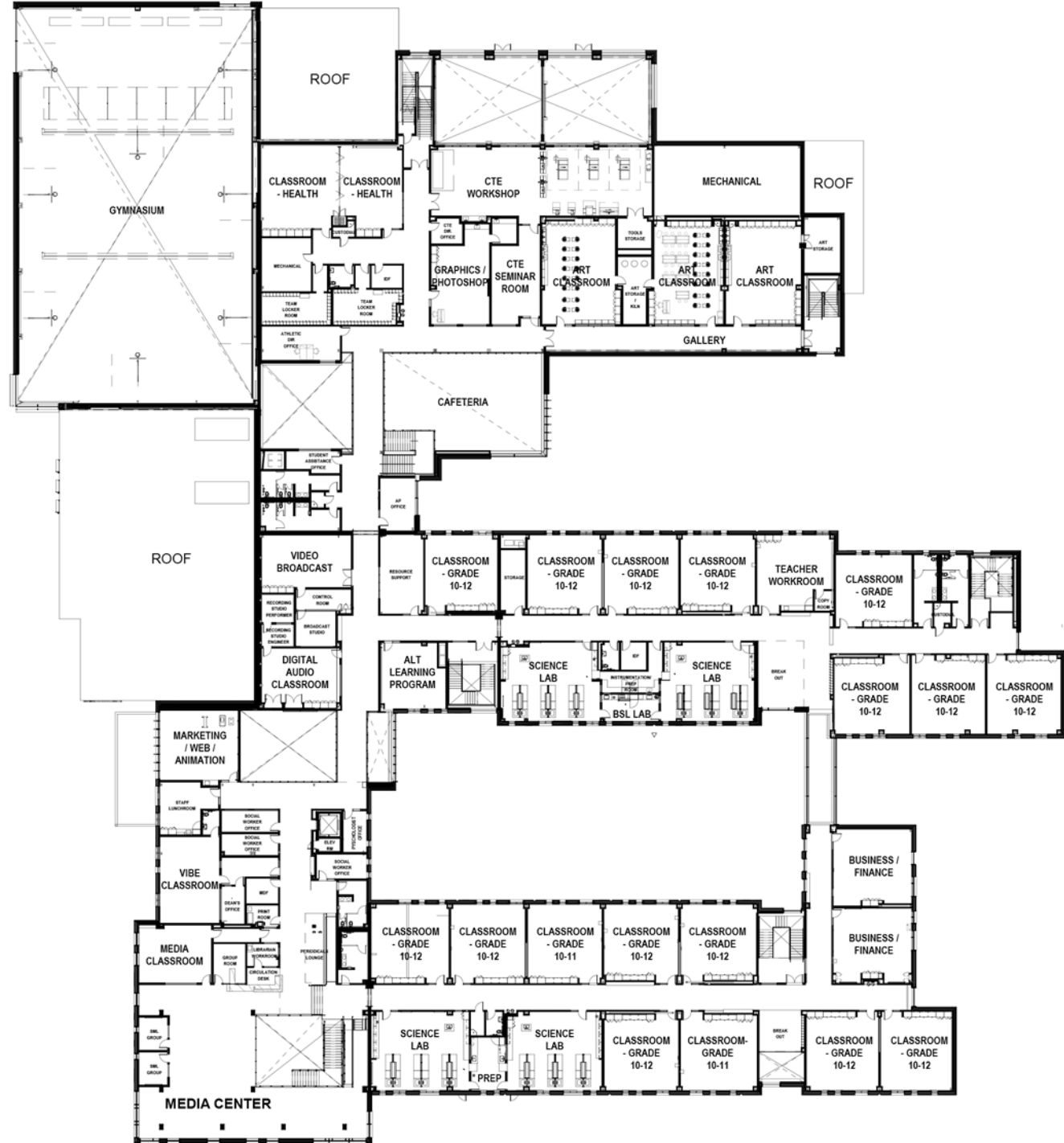


# FIRST FLOOR





# SECOND FLOOR





MAIN ENTRY

A large, vertical digital display wall on the left side of the main entry. The display features a purple background with various white icons including a lightbulb, a gear, a play button, and a graduation cap. The text on the display includes "MT HOPE HIGH SCHOOL" and "The school will be the first of its kind in the state to offer a dual credit program for students in the state of Montana. The program will allow students to earn college credit while still in high school. For more information, visit our website at www.mthope.edu." The display is mounted on a wall with a dark purple accent panel.

A large glass window on the right side of the main entry. The window features the text "MT HOPE HIGH SCHOOL" and "ADMINISTRATIVE" in purple. Below the text is a white silhouette of a person standing. The window is set within a white frame and is part of a larger wall with a light-colored, textured finish.





CAFE

KIES CAFE

The human body heals itself and  
nutrition provides the resources  
to accomplish the task.  
-Roger Williams





# MEDIA CENTER





# GYMNASIUM







AUDITORIUM



# BUDGET UPDATE

---



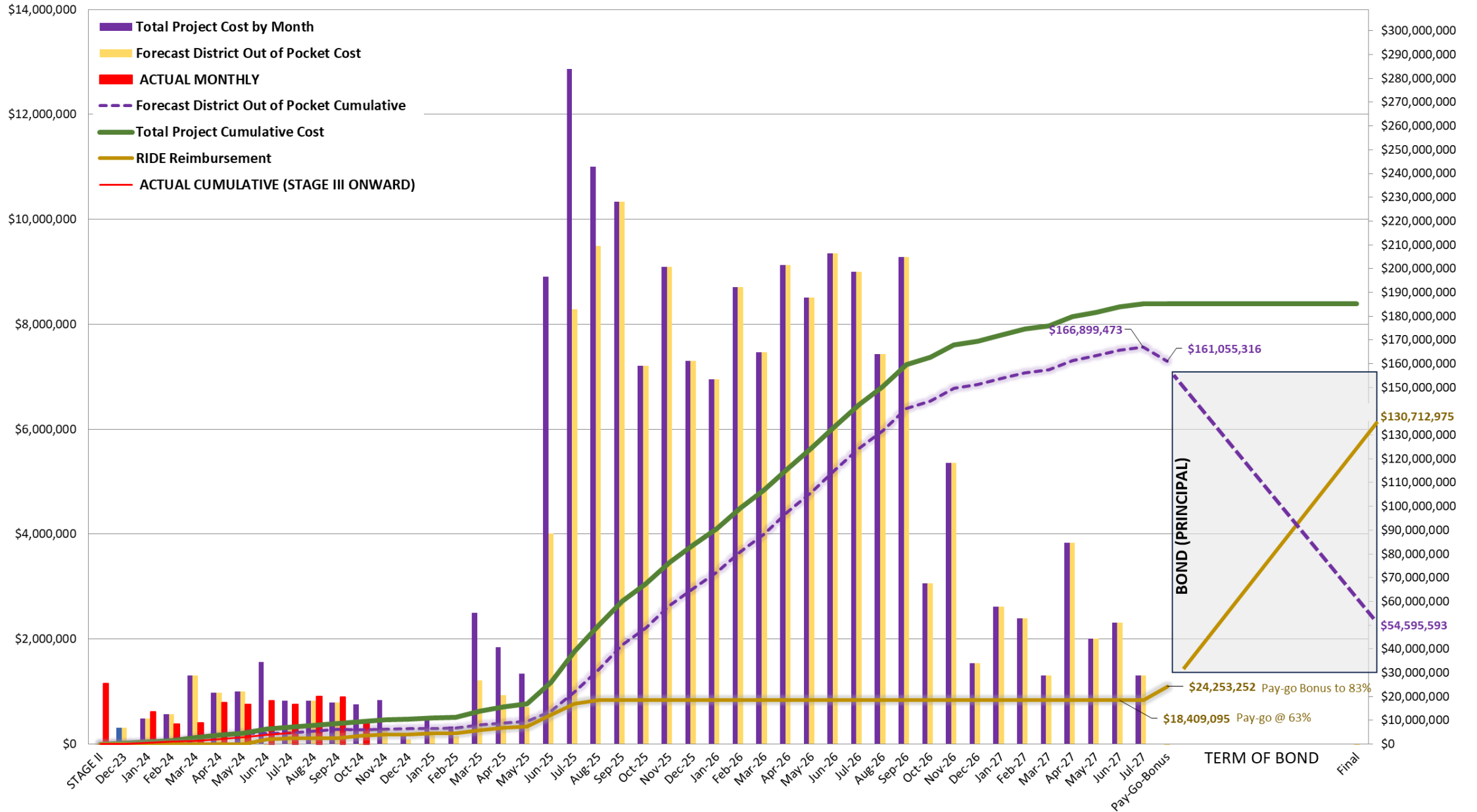
PMA Consultants

PERKINS —  
EASTMAN



# PROJECT CASHFLOW

## BWRSD Cashflow Projection - Stage III (SD) - \$186M TPB





# PROJECT SCHEDULE / NEXT STEPS

---

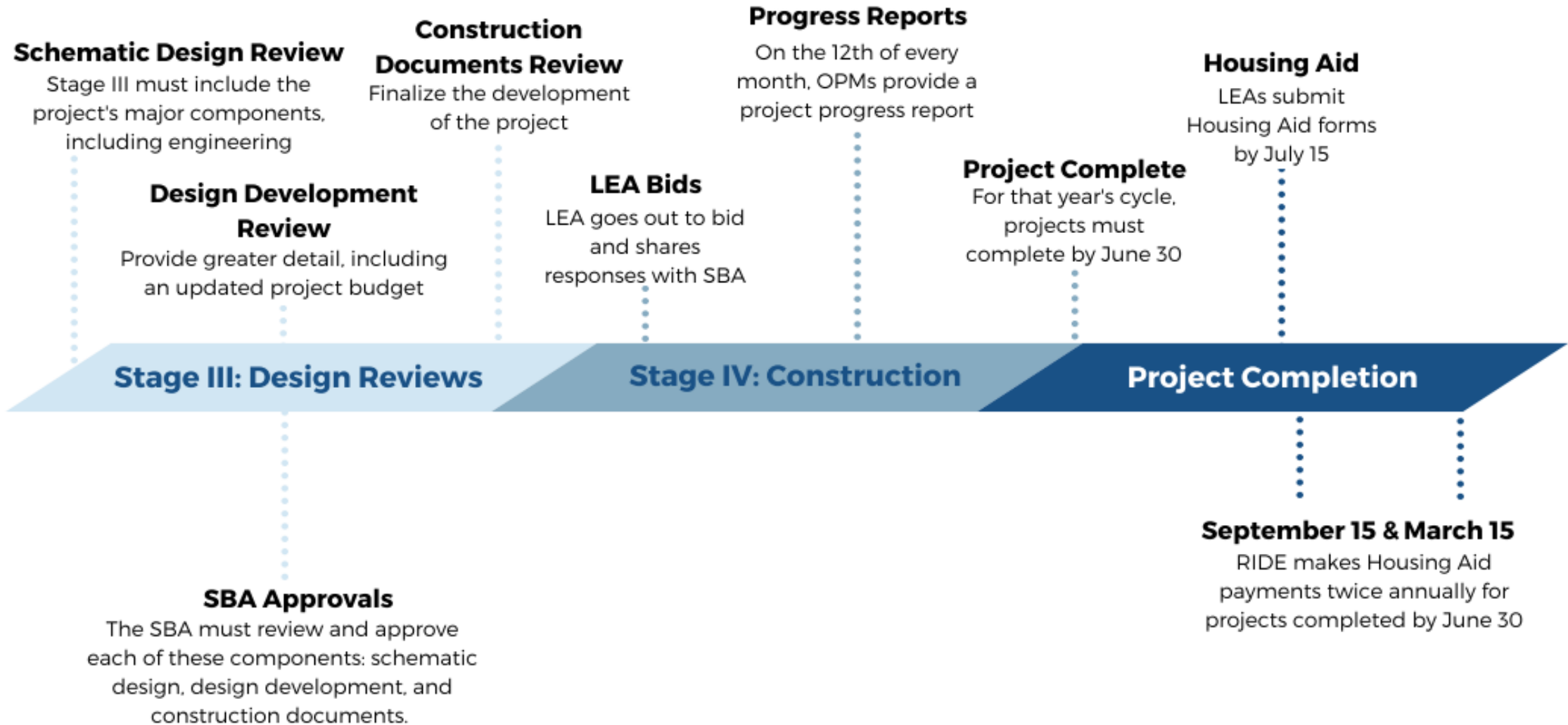


PMA Consultants

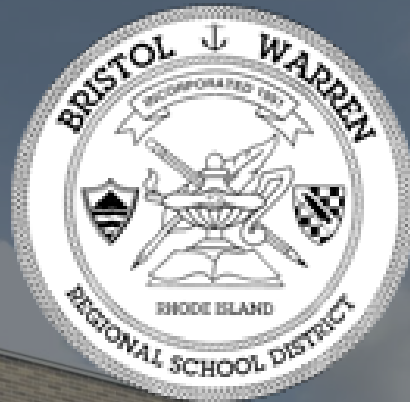
PERKINS —  
EASTMAN



# NEXT STEPS







**PMA Consultants**

**PERKINS —  
EASTMAN**

MT HOPE  
HIGH SCHOOL

**QUESTIONS? | THANK YOU!**